

Introducing Pro Services Powertrain for Microsoft Dynamics NAV

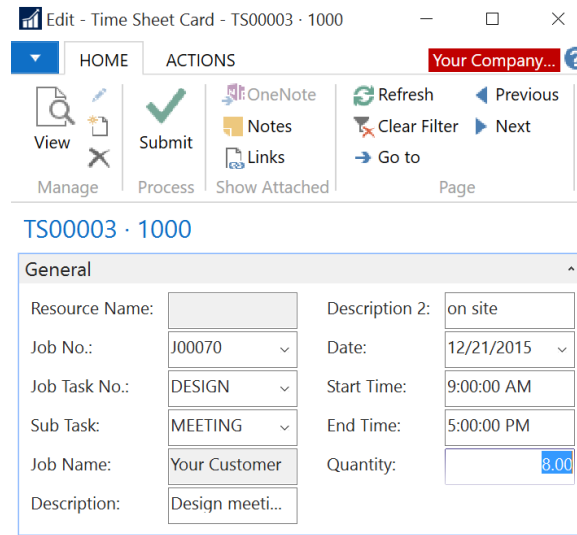
What is Pro Services Powertrain?
 Software designed specifically for the Professional Services industry. We've taken great care to accommodate the needs of professional service organizations – time sheets, budgets, and billing are all seamlessly integrated with finance so you can focus on servicing your customers!

What is Microsoft Dynamics NAV?
 Microsoft Dynamics NAV is a robust enterprise resource planning (ERP) software with fully integrated modules including finance, sales, purchasing, inventory, projects (Jobs), just to name a few! Our Pro Services Powertrain runs on Microsoft Dynamics NAV.

Take Control of your Projects!
 Are you managing your projects or are they *managing* you? You need vital project data now and we've got it all in a single glance – Budgets, Actuals, Variances, Statuses, Deadlines and more!

Easy Time Sheets

Maximize your billable hours
 Don't lose valuable billable hours due to poor time tracking! Our time entry card is a snap to use on your computer, tablet or phone.



Job Task No.	Description	Job Task Type	Work Type	Totaling	Budget (Qty)	Actual (Qty)	Timesheet (Qty)	Variance (Qty)	End Date	Schedule (Total Cost)	Schedule (Total Price)	Usage (Total Cost)	Usage (Total Price)
01-DESIGN	Design	Posting	SERVICES		185.00	110.00	11.00	55.00	2/2/2016		32,375.00		18,641.00
02-CONFIG	Configuration	Posting	SERVICES		0.00	0.00	0.00	0.00					
03-INSTALL	Install	Posting	SERVICES		100.00	0.00	0.00	100.00	1/9/2016		17,500.00		
04-SUPPORT	Support	Posting	SERVICES		0.00	0.00	0.00	0.00	1/23/2016				
05-CO	Change Orders	Posting			12.00	0.00	0.00	12.00	1/25/2016				

Sub Task	Description	Start Date	End Date	Duration	Status	Date Completed	Priority	Type	No.	Name	Budget (Qty)	Actual (Qty)	Timesheet (Qty)	Variance (Qty)	Unit of Measure
REVIEW	Review and followup	1/13/2016	1/19/2016	7	OPEN		HIGH	Resource	0000	Professional Services	25	0.00	0.00	25.00	HR
DESIGN	Design requirements meetings	1/1/2016	1/7/2016	7	COMPLETE	1/7/2016	HIGH	Resource	0000	Professional Services	80	104.00	10.00	-43.00	HR
WRITEUP	Design analysis & documentation	1/8/2016	1/12/2016	5	OPEN		HIGH	Resource	0000	Professional Services	80	0.00	0.00	80.00	HR

A new way to Operate!

Your role defines what you see!





No matter if you are delivering service, managing projects or managing divisions, we've created pre-configured roles that give you instant access to what you need and want to see. For instance, if you are a Resource Manager, you'll want to see time sheet data and your tiles will default accordingly. Should you want further details, you can simply click on the blue tiles below.

Key Performance Indicators

You can't manage what you can't measure!

This is why we've provided resource utilization, billable hours, non-billable hours, by day, by week, by month, by quarter and by year – all available from a single screen!

Time Sheets

 2	 0	 0	 0	11.00	21.00
Total Timesheets Open	Total Timesheets Submitted	Total Timesheets Approved	Total Timesheets Rejected	Total Time Sheet Qty	Total Job Journal Qty

Implement in a fraction of the time and cost

Our system is pre-configured, so you can start using the software almost immediately. Just enter or import basic data and you are ready to go! A typical ERP implementation can take hundreds if not thousands of hours. We've done the hard work for you, so you can focus on your business!

Available in the Cloud

The cloud saves you on hardware and IT costs. Take advantage of a full ERP system without ever having to install or maintain a server! Your data is secure and backed up automatically.

Just install our Windows client or use your favorite web browser. And if you prefer an on premise install, we offer that too!

Continual Enhancements

We believe in innovation and bringing efficiency to our clients and thus we listen to your feedback and with our enthusiasm and passion deliver beautiful and simple solutions for you!

Efficiency-enhancing Features

We've listed just a few of our features here and many of them you will simply not notice as they operate seamlessly in the background. Thus the user experiences efficiency, simplicity and ease-of-use!

Contact us today for a free demo! (888)-512-3195